

A BILLY JOEL PORTRAIT

(It's Still Rock And Roll To Me • Just The Way You Are • All About Soul)

BARITONE B.C.

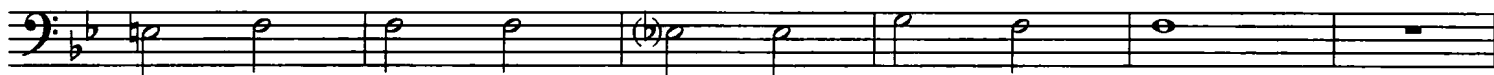
Words and Music by

BILLY JOEL

Arranged by JAY BOCOOK

Rock Shuffle (♩ = $\overset{\sim}{\underset{\sim}{\text{J}}}$ $\overset{\sim}{\underset{\sim}{\text{J}}}$) "It's Still Rock And Roll To Me"

2



08724566

IT'S STILL ROCK AND ROLL TO ME

Words and Music by BILLY JOEL

© 1980 IMPULSIVE MUSIC

This arrangement © 1995 IMPULSIVE MUSIC

All Rights Controlled and Administered by EMI APRIL MUSIC INC.

All Rights Reserved International Copyright Secured Used by Permission

JUST THE WAY YOU ARE

Words and Music by BILLY JOEL

© 1977, 1978 IMPULSIVE MUSIC

This arrangement © 1995 IMPULSIVE MUSIC

All Rights Controlled and Administered by EMI APRIL MUSIC INC.

All Rights Reserved International Copyright Secured Used by Permission

ALL ABOUT SOUL

Words and Music by BILLY JOEL

© 1993 IMPULSIVE MUSIC

This arrangement © 1995 IMPULSIVE MUSIC

All Rights Controlled and Administered by EMI APRIL MUSIC INC.

All Rights Reserved International Copyright Secured Used by Permission

-1-

BARITONE B.C.

51 Easy Ballad (♩ = ♪) "Just The Way You Are"

4

Musical staff for measure 51, featuring a bass clef, a key signature of one flat, and a 4-measure rest followed by a melodic line starting with a half note G2 and a quarter note F2. The dynamic marking *mp* is present.

59

Musical staff for measure 59, continuing the melodic line with a half note G2, a quarter note F2, and a quarter note E2.

66

Musical staff for measure 66, continuing the melodic line with a half note G2, a quarter note F2, and a quarter note E2.

77

Musical staff for measure 77, continuing the melodic line with a half note G2, a quarter note F2, and a quarter note E2.

Musical staff for measure 86, continuing the melodic line with a half note G2, a quarter note F2, and a quarter note E2.

87 Hard Rock "All About Soul"

Musical staff for measure 87, featuring a bass clef, a key signature of one flat, and a melodic line starting with a half note G2 and a quarter note F2. The dynamic marking *f* is present.

Musical staff for measure 96, continuing the melodic line with a half note G2, a quarter note F2, and a quarter note E2.

99

Musical staff for measure 99, continuing the melodic line with a half note G2, a quarter note F2, and a quarter note E2. The dynamic marking *f* is present.

107

Musical staff for measure 107, continuing the melodic line with a half note G2, a quarter note F2, and a quarter note E2.

113

Musical staff for measure 113, continuing the melodic line with a half note G2, a quarter note F2, and a quarter note E2. The dynamic marking *f* is present.

Musical staff for measure 122, continuing the melodic line with a half note G2, a quarter note F2, and a quarter note E2. The dynamic marking *ff* is present.